

# CEILING MOUNTED EXHAUST FAN (DUCT TYPE)

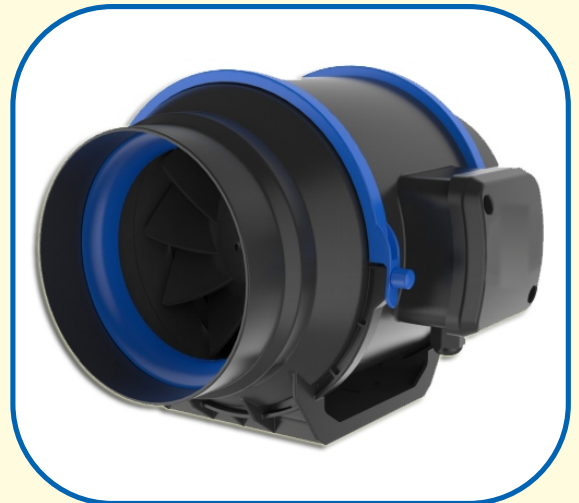


Vent Cart is the largest manufacture of the Duct type Ventilation fan in India. VC ceiling mounted ventilation fan have quite operation but cover long ventilation distance.

Type	Model No.	Voltage (V)	Frequency (Hz)	Power (W)	Volume (m/h)	Static Pressure (Pa)	Noise (dB)	Duct Size	Applicable Ama (m)	Net Weight
Plastic Series	VCFF100S	220-240	50/60	25	150	100	33	100	5-12	1.7
	VCFF100	220-240	50/60	30	200	110	35	100	8-16	1.9
	VCFF100B	220-240	50/60	35	250	120	39	100	10-20	1.9
	VCFF15	220-240	50/60	45	300	120	33	150	12-24	2.5
	VCFF15L	220-240	50/60	48	400	150	37	150	15-30	2.5
	VCFF15LB	220-240	50/60	55/50	550/450	150/120	42/37	150	18-44	3.5

## MIXED FLOW DUCT VENTILATOR

Vent Cart EMFF series Mixed Flow Duct Ventilator has the advantages of low noise, large air flow and high static pressure. This design is suitable for most of the ventilation situations and can be used instead of axial fan or centrifugal fan. Moreover, the motor and impeller are located at the center of the structure which means you can easily install, remove or maintain them without adjusting the Ducting even in sealed space. Also, it can be installed randomly in any side of the pipeline, with any angle of the pipeline.



### PERFORMANCE TABLE (VOLATAGE 220V-240V/FREQUENCY 50/60HZ)

Model No.	Voltage (V)	Frequency (Hz)	Power (W)	Volume (m/h)	Static Pressure (Pa)	Noise (dB)	Duct Size
VCMF100	28/25	200/150	180/130	30/25	100/125	1.8	8-16
VCMF150	50/40	500/400	300/250	35/30	150/160	2.2	18-36
VCMF200	70/60	850/700	350/280	50/45	200	3.1	34-76
VCMF250	170/130	1500/1100	550/400	60/54	250	7.0	42-84
VCMF315	320/230	2300/1800	700/500	66/61	315	9.7	60-120

# CIRCULAR DUCT VENTILATION FAN



**High Efficiency, High Pressure, Long-range Air Supply**

Circular fan body, directly connected with duct, easy for installation, Backward impeller with outer rotor motor, high pressure, high efficiency Invisible construction, fresh and beautify your life.

Model No.	Voltage (V)	Frequency (Hz)	Power (W)	Volume (m/h)	Static Pressure (Pa)	Noise (dB)	Duct Size	Applicable Ama (m)	Net Weight
VCCF100	220-240	50/60	68	300	300	50	100	12-24	3.0
VCCF125	220-240	50/60	70	400	350	48	125	16-32	3.0
VCCF150	220-240	50/60	80	600	400	50	150	24-48	4.5
VCCF160	220-240	50/60	95	750	450	49	160	30-60	4.5
VCCF200	220-240	50/60	130	950	550	52	200	38-76	5.5
VCCF250	220-240	50/60	150	1050	600	47	250	42-84	5.5
VCCF315	220-240	50/60	190	1500	700	51	315	60-120	6.5

## VENT CART AIR CIRCULATOR / GRID FAN

### Specifications

Ceiling fan with Auto-on function

Voltage 220-240V

Power 65W +-5%

CMH-3200

88\*20MM Copper Motor

3 ABS Blade

3 Speed

with remote control



VCAF32

### Specifications

- Specially designed for installation in false ceilings
- Fixed into a Std. 2'x2' ceiling grid & extremely easy to install.
- Revolving Louver distributes air in a large area.
- Available with built in LED lamps option.
- Double ball bearing & copper winding for extremely long life & durability.

### Best Suited For Applications

- Air Conditioned Rooms specifically where Hot pockets arise and Air Conditioning is in-effective
- Reduction in Air Conditioning Load as the Air Flow from the fan creates "Wind Chill Effect" giving improved comfort cooling.
- In low ceiling height application area where conventional ceiling fans cannot be installed.

# HEALTH AIR VENT CART AIR PURIFIER



## Vent Cart Air Purifier Specifications

Model	VC950	VC1200	VC2000
Airflow Capacity	CFM 950	CFM 1200	CFM 2000
Power Usage	560 W	650 W	1150 W

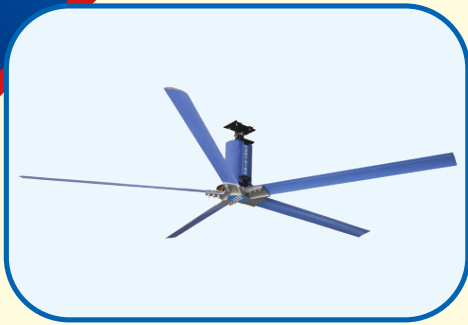
# VENT CART INDUSTRIAL EXHAUST FAN



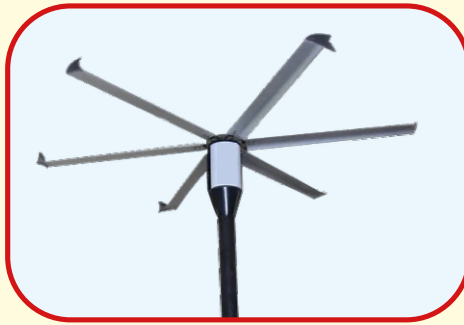
## Vent Cart Exhaust Fan Specification (Direct Drive)

Model No.	Power (W)	Vol(V)/Freq(Hz)	Rotation (RPM)	Airflow (CMH)	Size (MM)		
					L	W	H
VCEX600	0.25	415/50	720	17,000	750	332	750
VCEX800	0.4	415/50	520	23,000	982	372	980
VCEX1000	0.55	415/50	460	32,000	1112	372	1050
VCEX1200	0.75	415/50	460	37,000	1222	402	1220
VCEX1300	1.1	415/50	460	44,500	1383	402	1381

# VENT CART HVLS FANS



Geared Motor HVLS Fan



Pole Mounted HVLS Fan

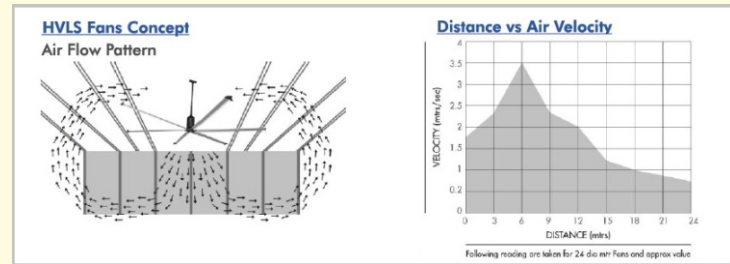


PMSM HVLS Fan

## Vant Cart HVLS Specifications (Optional IE3 Motor IPCC)

## HVLS Fans Concept

MODEL	FAN DIAMETER	HEIGHT FROM-FLOOR MIN-MAX	MOTER	AIRFLOW CFM (approx)	WORKING AREA Sq.Ft. (approx)	TORQUE NM	RPM
VCHVLS 7E	24 feet	9-11.5	1.5 KW	603,000	29,700	274	52
VCHVLS 6E	20 feet	7-8.5	1.5 KW	540,000	21,600	211	66
VCHVLS 5E	16 feet	6-7.5	1.1 KW	477,000	16,200	148	69
VCHVLS 4E	12 feet	5-6.5	1.1 KW	405,000	10,800	121	85
VCHVLS 3E	10 feet	5-6.5	0.75 KW	288,000	8,100	57	122
VCHVLS 2.4E	8 feet	5-6.5	0.75 KW	225,000	6,300	57	122



Air Flow Pattern

Distance vs Air Velocity

## HVLS Fans Benefits and Safety Features

- High Performance industrial fans.
- Single fan replaces multiple wall mounted fan.
- Distributes air up to 28,000 sq.ft., corner to corner, outstanding coverage.
- Secondary Anti-Fall Safety Systems provided for all major Components
  - ⊙ Structure-Secondary Wire rope to lock to building structure.
  - ⊙ Blades Embedded Wire Ropes in Blade
  - ⊙ Hub-Special anti-fall protection arrangement.
- Aerofoil Blade design with Blade Angle of 27 deg for optimum Air Flow.

# EVAPORATIVE INDUSTRIAL AIR COOLER



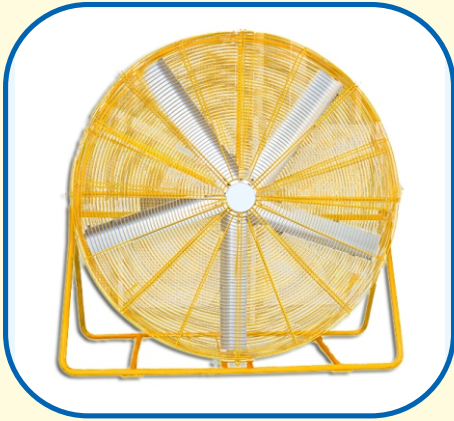
Model No.	Air Flow CMH	Motor KW	Power (W)	Volume (m/h)
VCAC 18	18,000	1.1 KW	1/3	Top/Side/Bottom
VCAC 22	22,000	2 KW	1/3	Top/Side/Bottom
VCAC 30	30,000	3 KW	3	Top/Side/Bottom

## Vent Cart Cooling Advantage

- Comfort cooling up to 20°C with high airflow
- Fresh, Filtered, Cool & Oxygen Rich Air
- Energy saving up to 80%
- Environmental Friendly
- Low Capex
- Dust protection Mesh
- Factory Built Modular Construction for Long Life
- Vent Cart Coolers use original Munters CelDek pads for best cooling Efficiency and Long Life
- Vent Cart Coolers are fitted with HW-Made in Italy, 5 Blade.
- Sickle Design Fans for max Air Flow at lowest sound levels.
- Vent Cart 3 phase machines have 2 Speed Control



# YU GO FAN APPLICATION



## Specifications

- Fan Diameter - 2.4 Meter / 8 Feet
- Power - 0.75 KW/3 & 1 Phase
- Speed (RPM) - 147
- Air Flow (CMH) - 99,000
- No. of Blade - 5
- Fan Blade Material - Aluminum 6061T6 Grade
- Noise Level (db) - 45
- Effective Area Coverage (Sq. Ft.) - 4500 IP55 motor & gearbox with synthetic oil & VFD from Germany

## Best Suited For Applications

- Industrial Floors, Events, Open area
- Air Flow from the fan creates "Wind Chill Effect" improved comfort cooling.
- Easier to move

## Advantages

- Specially designed for installation on floor
- Sturdy Body With Wheels for portability.
- Distributes air in a large area horizontally.
- Low Noise...

## About Us

Vent Cart Cooling Systems has been providing services since last decade and is a leading Manufacturer & Supplier of Evaporative Air Coolers, HVLS Fans, Exhaust Fans, In-line Duct Fans, Recessed Ceiling Fans, Commercial Air Purifiers etc. Vent Cart has an extremely prestigious customer base supported across India through a strong partner network on multiple projects and locations. Vent Cart product strategy is driven by Customer requirements, Safety, Quality, Reliability and Durability. Vent Cart Products offer the best technology at the most competitive pricing with assured service support and spares.



# ACCESSORIES



DISC DIFFUSER



OUTER GRILL SQUARE



OUTER GRILL ROUND



STEEL COWL



STEEL GRILL



FLEXIBLE PIPE ALUMINIUM

# PVC ACCESSORIES



PIPES



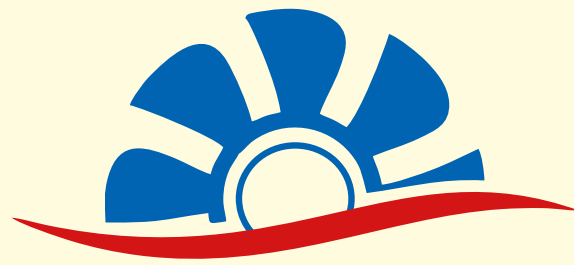
PVC BAND



PVC T

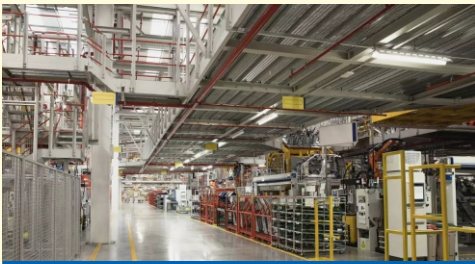


CLAMP



**Vent Cart**  
VENTILATION

## APPLICATION OF PRODUCTS



**Factory**



**Commercial Building**



**House**



**Bungalow**



**Bathroom**

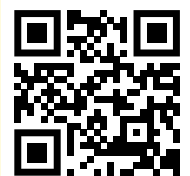


**Kitchen**



**Parking**

FOLLOW US



For product information, consumer complains and feedback.



**+91 83187 53930, +91 70077 61920**



**+91 98394 42344**

**Website: [www.ventcart.com](http://www.ventcart.com) | Email: [info@ventcart.com](mailto:info@ventcart.com)**

\*Model No may varied for the same delivered product without any prior notice.